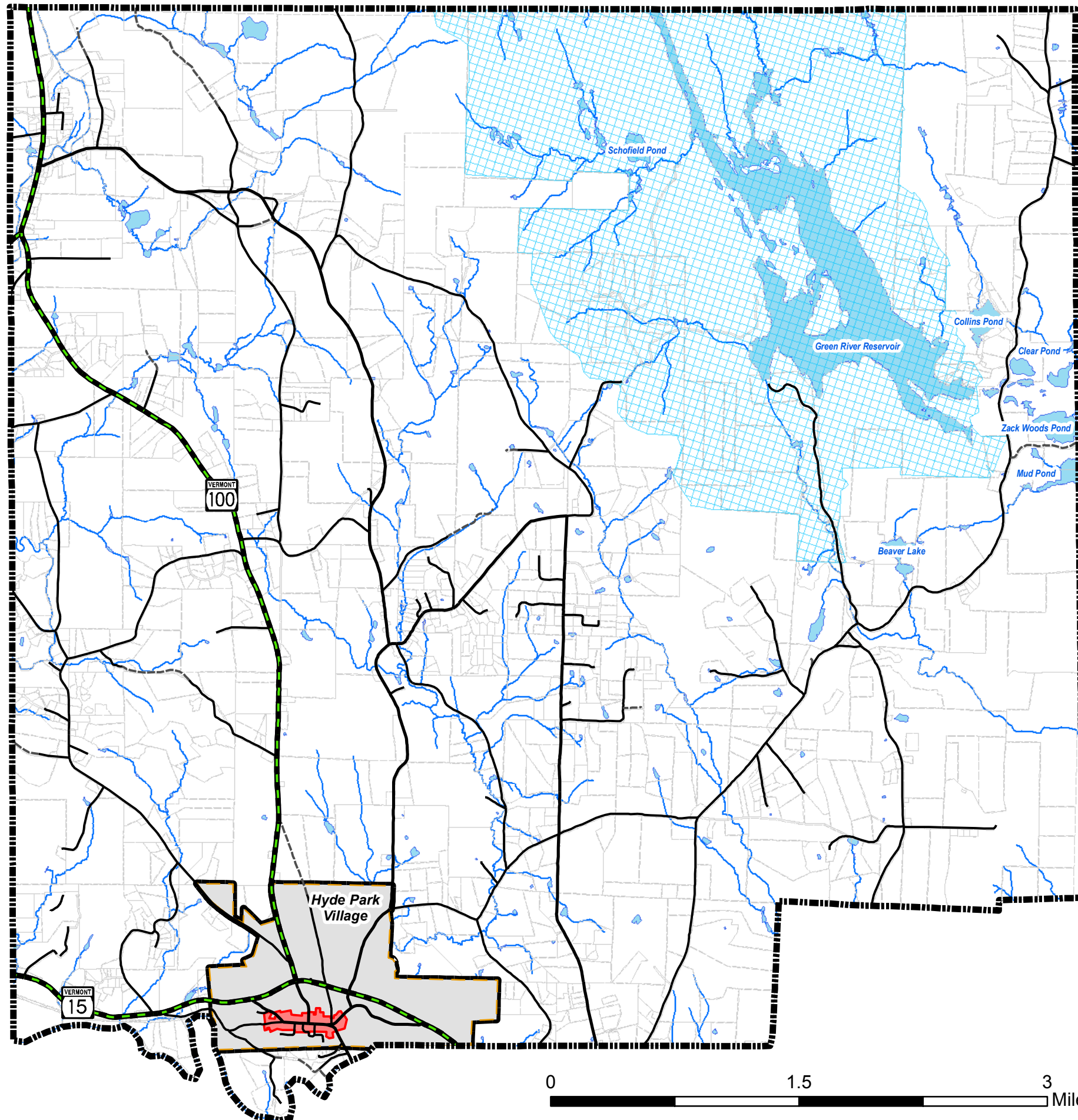


# Green River Reservoir Viewshed Overlay District

Town of Hyde Park



### Overlay Districts

- Green River Reservoir Viewshed Overlay

### Boundaries

- Designated Village Center
- Parcel Boundary
- Village Boundary
- Town Boundary

### Other Features

- Class 2 Roads
- Class 3 Roads
- Class 4 Roads
- State Highway
- Lake/Pond
- River/Stream

### DATA SOURCES:

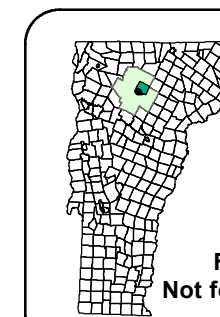
POLITICAL BOUNDARIES: VCGI, 2008.

ROADS: E911 Road centerlines from 1:5,000 orthophotos and GPS, VCGI, 2014.

SURFACE WATER: Vermont Hydrography Dataset digitized from 1:5000 orthophotos, VCGI, 2008.

GREEN RIVER RESERVOIR VIEWSHED OVERLAY DISTRICT: Developed and digitized by LCPC for the Town of Hyde Park, 2005.

PARCEL BOUNDARIES: Town of Hyde Park, 2014.



NAD 1983  
VT State Plane, Meters  
Traverse Mercator

For planning purposes only.  
Not for regulatory interpretation.



Lamoille County Planning Commission  
P.O. Box 1637, 52 Portland Street  
Morrisville, VT 05661  
802-888-4548 f: 802-888-6938  
www.lcpcvt.org June 2015