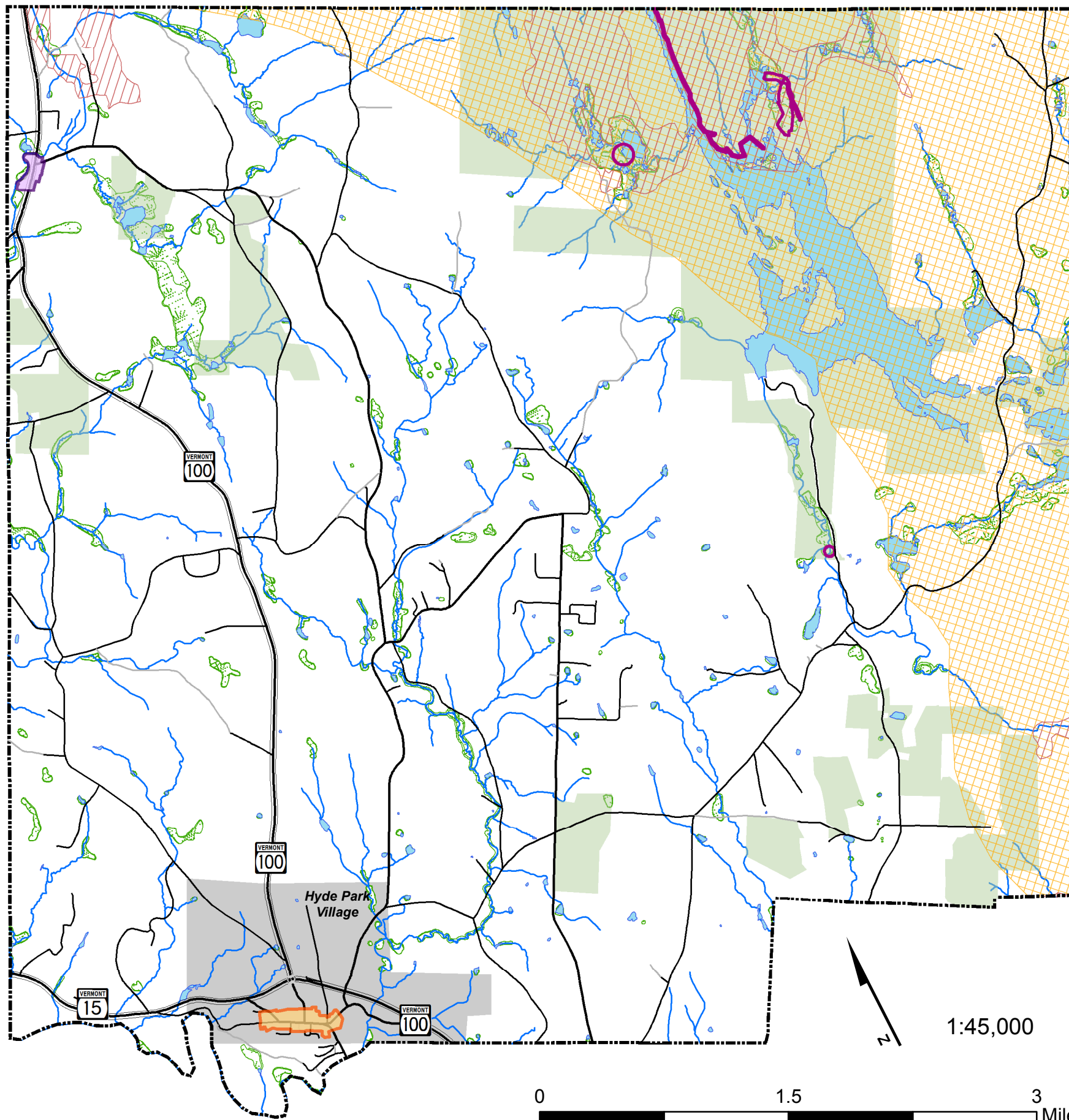


Town Critical Habitat

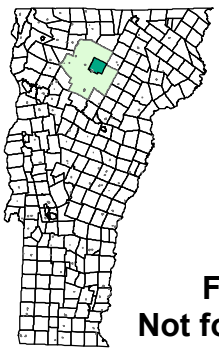
Town & Village of Hyde Park 2017 Comprehensive Development Plan



-  Rare/Threatened/Endangered Species
-  Deer Wintering Area
-  Bear Habitat
-  Lake/Pond
-  Conserved Public Land
-  River/Stream
-  Wetland
-  North Hyde Park Village Center
-  Hyde Park Village Center

DATA SOURCES:

POLITICAL BOUNDARIES: VCGI, 2008.
 ROADS: E911 Road centerlines from 1:5,000 orthophotos and GPS, VCGI, 2010.
 PUBLIC CONSERVATION LANDS: Conserved lands database, Vermont Land Trust, 2009.
 SURFACE WATER: Vermont Hydrography Dataset digitized from 1:5000 orthophotos, VCGI, 2008.
 DEER WINTERING AREAS: Digitized from 1:5,000 orthophotos, VANR, 2011.
 BEAR HABITAT: VANR, 1989.
 RARE/THREATENED/ ENDANGERED SPECIES: Vermont Nongame and Natural Heritage Program, VANR, 2010.



**NAD 1983
VT State Plane, Meters
Traverse Mercator**

**For planning purposes only.
Not for regulatory interpretation.**

Lamoille County Planning Commission
 P.O. Box 1637, 52 Portland Street
 Morrisville, VT 05661
 802-888-4548 f: 802-888-6938
 www.lpcvt.org October 2017