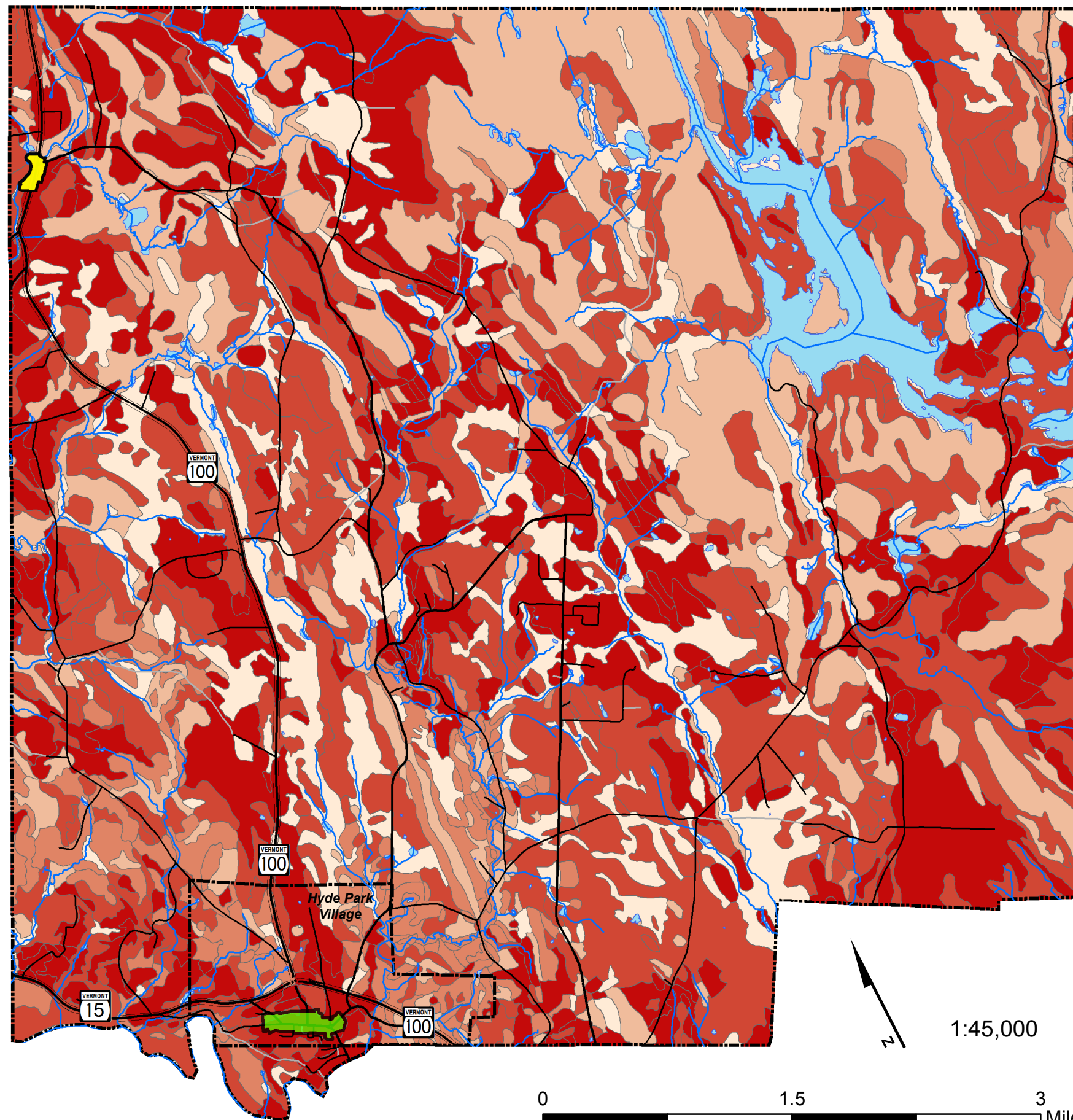


Town Onsite Septic Suitability

Town & Village of Hyde Park 2017 Comprehensive Development Plan



Onsite Septic Suitability

- Very Suitable
- Moderately Suitable
- Marginally Suitable
- Not Suitable
- Not Rated

Village Centers

- North Hyde Park Village Center
- Hyde Park Village Center

DATA SOURCES:

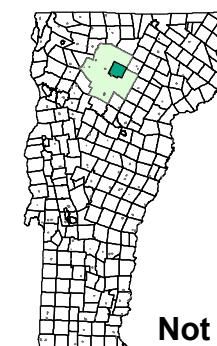
POLITICAL BOUNDARIES: VCGI, 2008.

ROADS: E911 Road centerlines from 1:5,000 orthophotos and GPS, VCGI, 2010.

SURFACE WATER: Vermont Hydrography Dataset digitized from 1:5000 orthophotos, VCGI, 2008.

ONSITE SEPTIC SUITABILITY: A subset of SSURGO certified soil data depicting onsite sewage disposal ratings of Vermont soils. Ratings are based on Vermont Environmental Protection Rules, August 16, 2002, based on 20% maximum slope - for lots created on or after June 14, 2002.

It doesn't replace onsite investigation. This data set is not designed for use as a primary regulatory tool in permitting or citing decisions, but may be used as a reference source. Created by USDA - NRCS, 2008; distributed by VCGI.



**NAD 1983
VT State Plane, Meters
Traverse Mercator**

**For planning purposes only.
Not for regulatory interpretation.**

Lamoille County Planning Commission
P.O. Box 1637, 52 Portland Street
Morrisville, VT 05661
802-888-4548 f: 802-888-6938
www.lcpcvt.org Updated October 2017