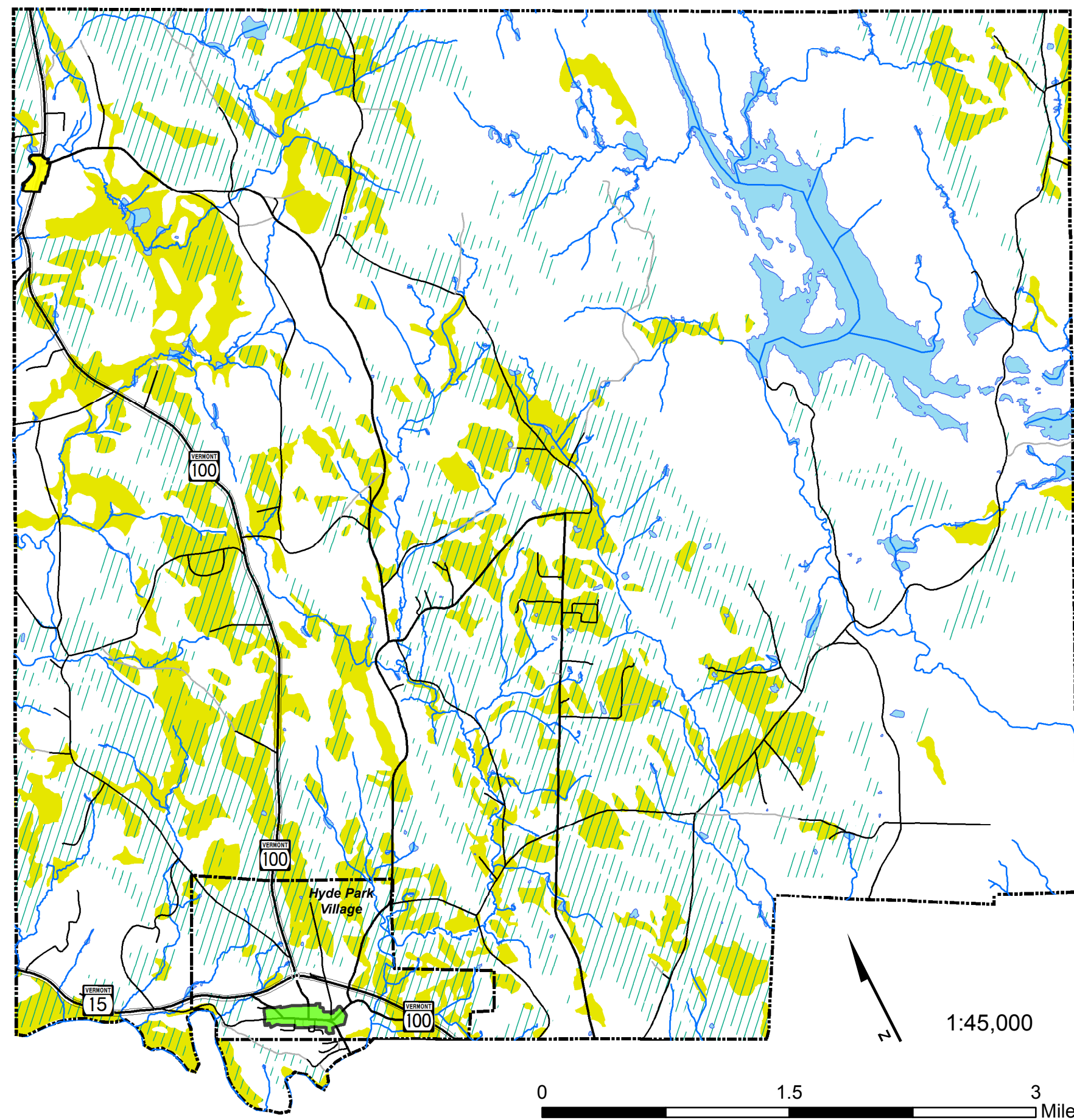




Town Soil Resources



Town & Village of Hyde Park 2017 Comprehensive Development Plan



Soil Resources

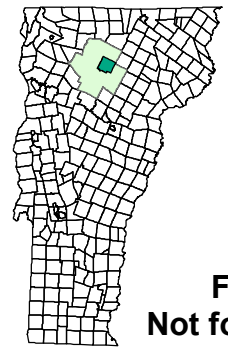
-  Class I Productive Forest Soils
-  Prime Agricultural Soils

Village Centers

-  North Hyde Park Village Center
-  Hyde Park Village Center

DATA SOURCES:

POLITICAL BOUNDARIES: VCGI, 2008.
ROADS: E911 Road centerlines from 1:5,000 orthophotos and GPS, VCGI, 2010.
SURFACE WATER: Vermont Hydrography Dataset digitized from 1:5000 orthophotos, VCGI, 2008.
SOILS: Optically scanned from 1:20000 USDA-NRCS soil maps, 1981. VCGI, 2007.



**NAD 1983
VT State Plane, Meters
Traverse Mercator**

**For planning purposes only.
Not for regulatory interpretation.**

Lamoille County Planning Commission
P.O. Box 1637, 52 Portland Street
Morrisville, VT 05661
802-888-4548 f: 802-888-6938
www.lcpcvt.org Updated October 2017