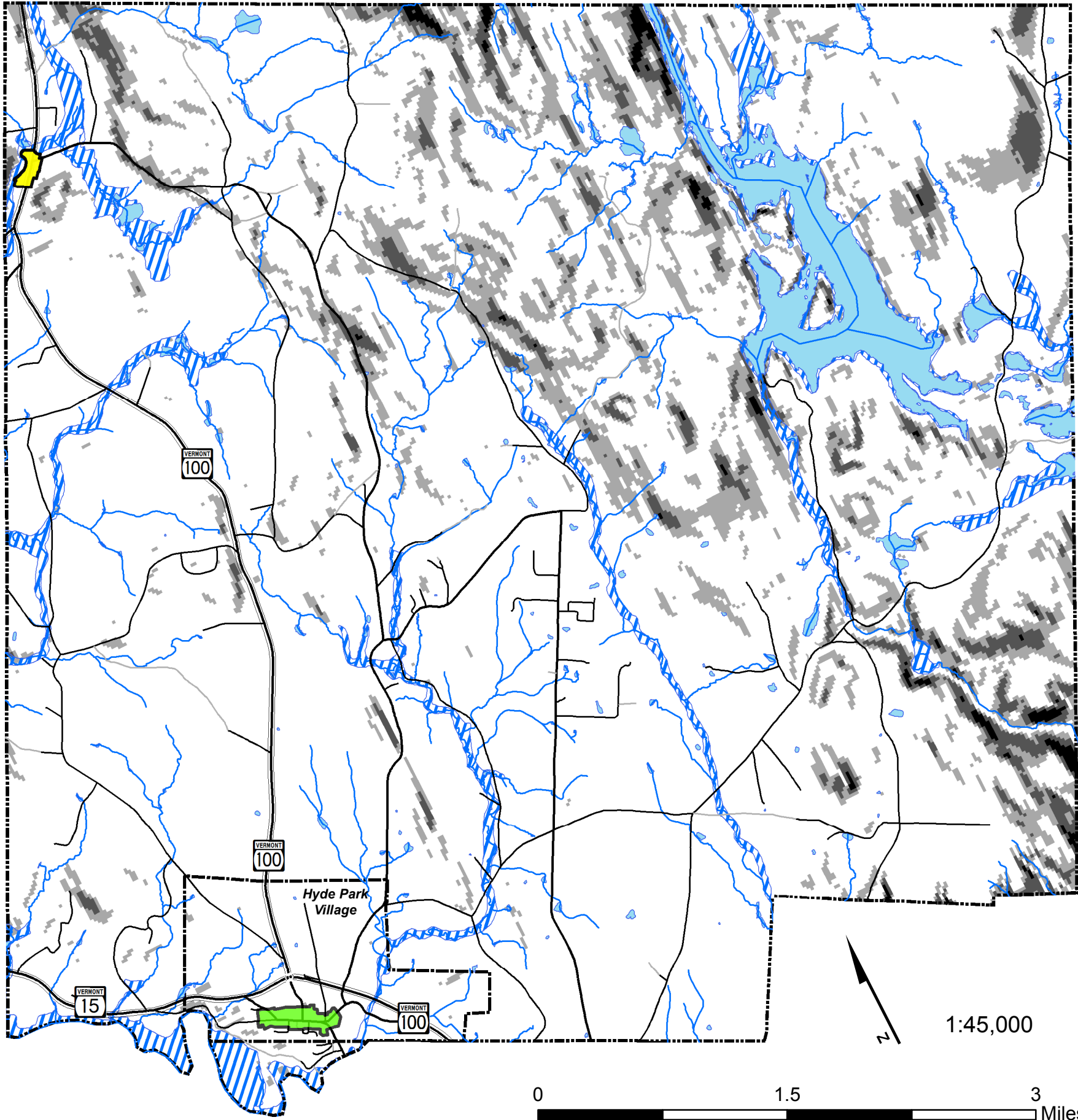


Town Topographic Limitations

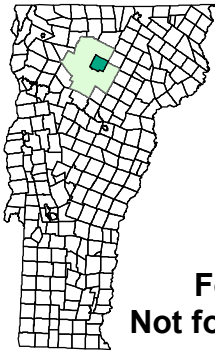
Town & Village of Hyde Park 2017 Comprehensive Development Plan



| | |
|--|--------------------------------|
| | 100 Year Floodplain |
| | 0 - 20% Slope |
| | 20 - 30% Slope |
| | 30 - 45% Slope |
| | >45% Slope |
| | North Hyde Park Village Center |
| | Hyde Park Village Center |

DATA SOURCES:

POLITICAL BOUNDARIES: VCGI, 2008.
 ROADS: E911 Road centerlines from 1:5,000 orthophotos and GPS, VCGI, 2010.
 SURFACE WATER: Vermont Hydrography Dataset digitized from 1:5000 orthophotos, VCGI, 2008.
 FLOOD PLAIN: Digitized from FEMA Flood Insurance Rate Maps. DEC, Water Quality Division.
 SLOPE: Derived from USGS National Elevation Dataset, 1:24000 30-meter DEM. VCGI, 2001.



**NAD 1983
VT State Plane, Meters
Traverse Mercator**

**For planning purposes only.
Not for regulatory interpretation.**

Lamoille County Planning Commission
 P.O. Box 1637, 52 Portland Street
 Morrisville, VT 05661
 802-888-4548 f: 802-888-6938
 www.lcpcvt.org Updated October 2017