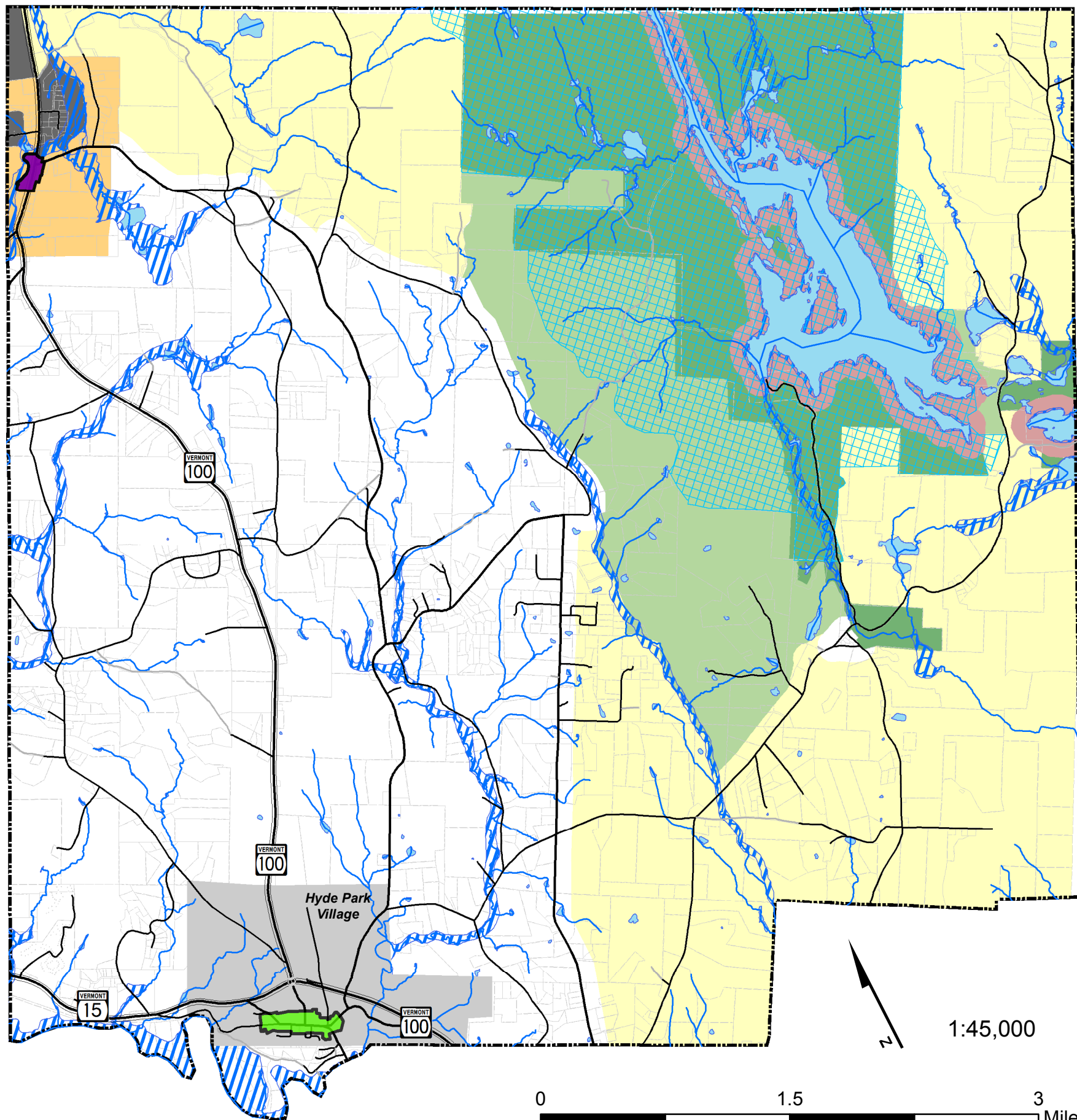


# Town Zoning





## Town & Village of Hyde Park

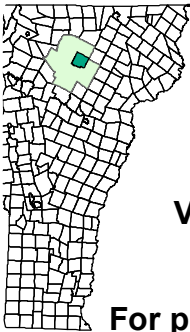
### 2017 Comprehensive Development Plan



#### Zoning and Overlay Districts

-  RR2
-  RR5
-  North Hyde Park/Garfield
-  Shoreland
-  Conservation - 10AC
-  Conservation - 27AC
-  North Hyde Park Industrial/Commercial
-  Well-Head Protection Area
-  Green River Reservoir Viewshed Overlay District

-  North Hyde Park Village Center
-  Hyde Park Village Center
-  100 Year Floodplain
-  Parcel Boundaries



**NAD 1983**  
**VT State Plane, Meters**  
**Traverse Mercator**

**For planning purposes only.**  
**Not for regulatory interpretation.**

**DATA SOURCES:**

**POLITICAL BOUNDARIES:** VCGI, 2008.  
**ROADS:** VTRANS roads centerlines, 2017.  
**SURFACE WATER:** Vermont Hydrography Dataset digitized from 1:5000 orthophotos, VCGI, 2008.  
**ZONING DISTRICTS:** Digitized by LCPC, 2016.  
**FLOOD PLAIN:** Digitized from FEMA Flood Insurance Rate Maps.  
 DEC, Water Quality Division.  
**PARCEL BOUNDARIES:** Town of Hyde Park, 2016.

Lamoille County Planning Commission  
 P.O. Box 1637, 52 Portland Street  
 Morrisville, VT 05661  
 802-888-4548 f: 802-888-6938  
 www.lpcvt.org Updated October 2017