

Hyde Park Fire District #1

PO Box 25

North Hyde Park, Vermont 05665-0025

April 1, 2014

RE: Hyde Park Fire District #1 Wellhead Protection Area

Source Protection Plan

Dear Town and State Officials;

This letter is written to inform you that Hyde Park Fire District #1 has developed a Source Protection Plan for our Well Head Protection Area (WHPA) in order to protect the quality and safety for the well water source of supply for HPFD#1's water system. A map of the Well Head Protection Area is attached for your information. We understand as town and state officials you may have influence over the development that can or will occur within the WHPA.

Hyde Park Fire District #1 is asking you to take every precaution to ensure that the well continues to provide a high quality drinking water for our use. We therefore ask that you take the following action to protect our sources of water supply:

- 1) During permitting for any future development within the WHPA, please take action to protect the quality of the surface and groundwater.
- 2) During regular road maintenance, please take action to ensure that a minimum amount of road salt is used to provide safety while de-icing highways.

Please notify us about any activity or proposed land use changes within the boundaries of this WHPA that might have the potential to impact the water quality of the Hyde Park Fire District #1 water supply.

Thank you for your cooperation in this matter.

Sincerely,

  
Julia J. Compagna

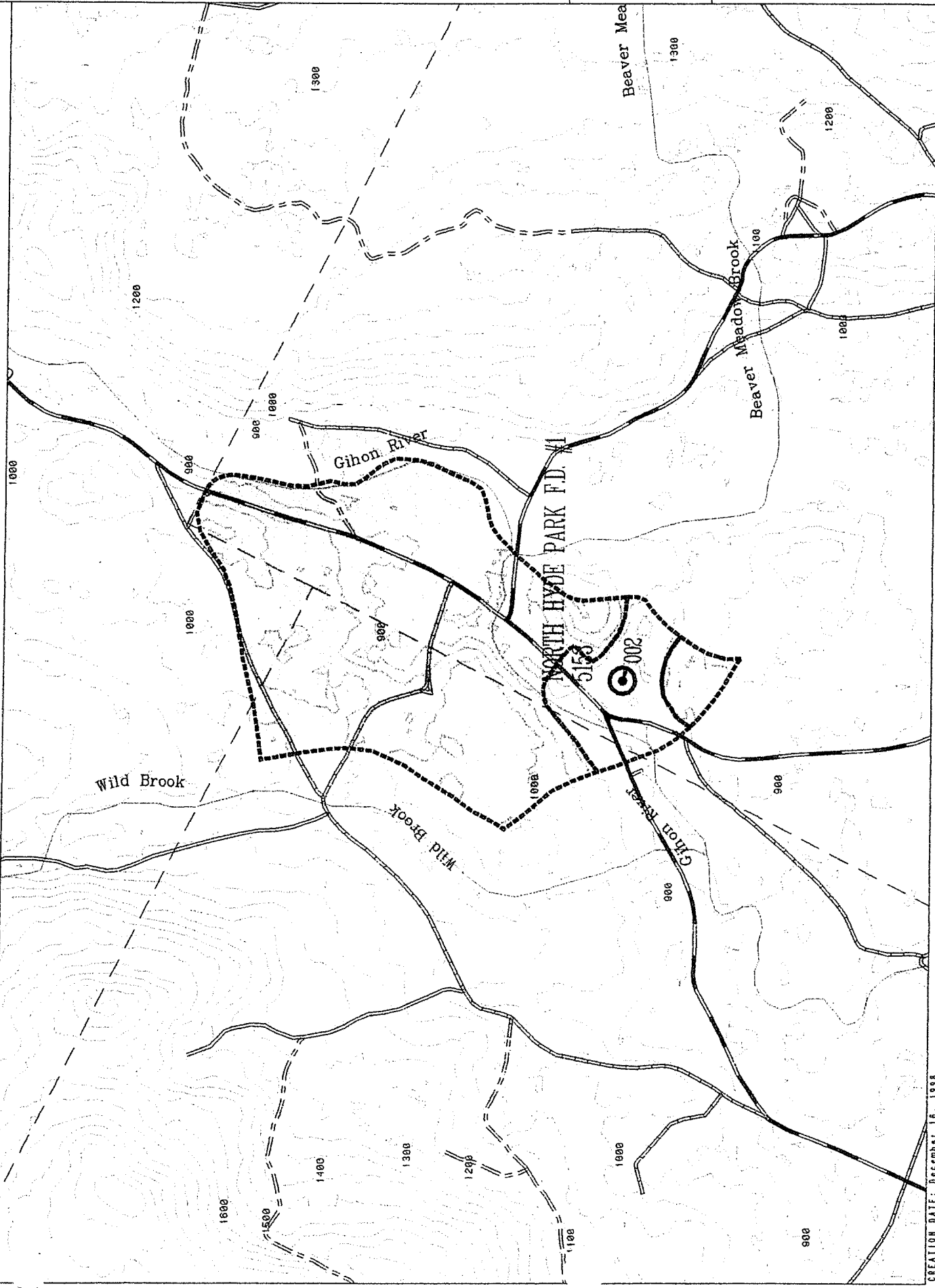
Certified Class II Water Operator

Enclosure

cc: Hyde Park Selectboard, Hyde Park Health Officer, District 5 DEC Coordinator,  
Hyde Park Planning Commission & DRB, District 5 Act 250 Coordinator

# SOURCE PROTECTION AREAS

## NORTH HYDE PARK F.D. #1: 5153 - TOPO 32A32C



- Sui
- Wei
- Her
- Mer
- Lil
- Uni
- S01
- S01
- Sui
- Pro
- Z01
- Z01
- WHI
- 50
- Sti
- Top

WATER SUPPLY: GI  
 PUBLISHER: DRI  
 DATE: 1998

COORD. SYSTEM: SI  
 COORDINATE: UTM  
 SOURCE: TOPO  
 SCALE: 1:50,000  
 LABEL: 1:50,000  
 DATE: 1998  
 WATER: 1:50,000

SYSTEM: MSD-WI  
 PLOT PATH: -WSI

