

## Town of Hyde Park - Class 4 Town Highways

Class 4 Highway #	VTRANS Mileage	Class 4 Miles Plowed by Town	Description
9	0.33	0.10	2 homes - partially plowed by Town - northern Landell Road loop plowed to Jones/Monteith parcels; southern loop is Class 3 and plowed; easterly Class 4 not plowed
11	0.20	0.00	0 homes - not maintained - in grass/wooded condition - 450' north of 724 Cooper Hill driveway (Neil Johnston)
12	0.50	0.00	0 homes - not maintained - in grass/wooded condition - 725' south of Black Dog Lane - Jane Ann Road
15	1.98	0.40	4 homes - partially plowed by Town - Begins at 238 Diggins Road (Fontaine) ends in State Park; plowed from Fontaine to Riddle driveway past Fire Pond = 0.40 Class 4 miles
22	0.44	0.00	0 homes - not plowed - minimal summer maintenance only - Zack Woods Road - to Town of Wolcott
23	0.25	0.00	1 home - not maintained - in grass/wooded condition and private driveway use - Hanscom 104 Long Hill Lane - to Jones Road & North Hyde Park Road
25	0.14	0.00	1 home - not maintained - end of Fleury Road for private driveway use to Smith camp & 394 Fleury Road (Patch home)
27	0.05	0.00	1 home - not maintained - Munson Road
29	0.07	0.00	1 home - partially plowed by Town - for private driveway use by 281 Bourdeau Lane - NOTE: Class 3 not plowed for 60 feet at end
30	0.32	0.03	0 homes - partially plowed by Town - most in grass/wooded condition - begins at 545 Benson Road (Beattie) - NOTE: 0.10 miles of private driveway plowed to Beattie home
31	0.40	0.00	2 homes - not maintained - for private driveway to Mallory (1063 Centerville Rd) & Silverstein (121 Parot Rd) - NOTE: 125 feet of private driveway plowed at end
38	0.85	0.00	3 homes - not maintained - in grass/wooded condition - used by 572 & 760 Webster Road and 118 Quiet Lane (Lague) residences to VT100 and Grimes Road
39	0.03	0.00	1 home - not maintained - for private driveway use by Carpenter (216 Mead Road) - NOTE: 0.05 miles (260 feet) of Class 3 not plowed to Carpenter home
42	0.05	0.00	3 homes - not maintained - for private driveway use Old Farm Lane (Baker, Lumbr, Hersh)
45	0.10	0.00	1 home - not maintained - for private driveway use by Wickenden (446 Tenney Hill Road)
50	0.38	0.00	3 homes - not maintained - for private driveway use Fagnant Farm Road to Garfield Road and Trombley Hill Road
51	0.10	0.10	2 homes - partially plowed by Town - end of Leriche Road for private driveway to 280 Leriche Road - NOTE: 0.06 (300 feet) of private driveway plowed at end
56	0.20	0.05	2 homes - partially plowed by Town - end of East Johnson Road for private driveway use (25 Maple Run Road) - to Town of Johnson - NOTE: turnaround outside public ROW
59	0.55	0.10	18 homes in Morristown and 5 homes in Hyde Park on Woodlands Lane - starts as Ten Bends Drive, then Railroad Avenue, wooded along LVRT, Morey Road end plowed
62	0.04	0.00	0 homes - minimal summer maintenance - cross road at LVRT trailhead site
68	0.08	0.00	Sheriff's Department - 162 Commonwealth Ave - State maintained
72	0.06	0.00	0 homes - not maintained - in grass/wooded condition - westerly boundary of Village of Hyde Park wastewater disposal parcel along Centerville Brook
73	0.05	0.00	1 home - not maintained - for private driveway use to 2903 Cleveland Corners Road (Terrier)
75	0.54	0.00	2 homes - not maintained - for private driveway use to Manosh (907 Thompson Hill) and Lafoe (916 Thompson Hill) residences - to Town of Eden
76	0.30	0.00	1 home - not maintained - for private driveway use to Lepito (6050 VT100) and crosses Gihon River (no bridge) to Bullard parcel
78	0.11	0.06	1 home - partially plowed by Town to Bullard home at end of Class 4 - NOTE: Sanding only to end of Class 3 at turnaround area 530 feet past 590 Heath Road
26 C4s	8.12	0.84	Total mileage matches VTrans records

Not listed above - Unclassified town highways which are plowed but the Town receives no state aid - Sylvan Road (0.10 mi. & 3 homes, Crabapple Lane (0.20 mi. & 9 homes)

### KEY

Red - Town plowing may occur on Class 4 portion or private driveway or not on a Class 3

Bold - Thru road to another town or a Class 3 or Class 2 Town Highway or a State Highway

Not Bold - Not connected to another road or municipality

### 3 Needed Turnaround Projects

Manning Road - move 100' to flat

Marcoux Road - need adequate size

Mourning Dove Lane - need to push to right

Sept. 6, 2018 RonR





# UnNamed, on Cooper Hill Road - TH #11

Hyde Park, VT

September 5, 2018

1 inch = 134 Feet

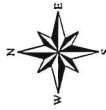


[www.cai-tech.com](http://www.cai-tech.com)



Data shown on this map is provided for planning and informational purposes only. The municipality and CAI Technologies are not responsible for any use for other purposes or misuse or misrepresentation of this map.





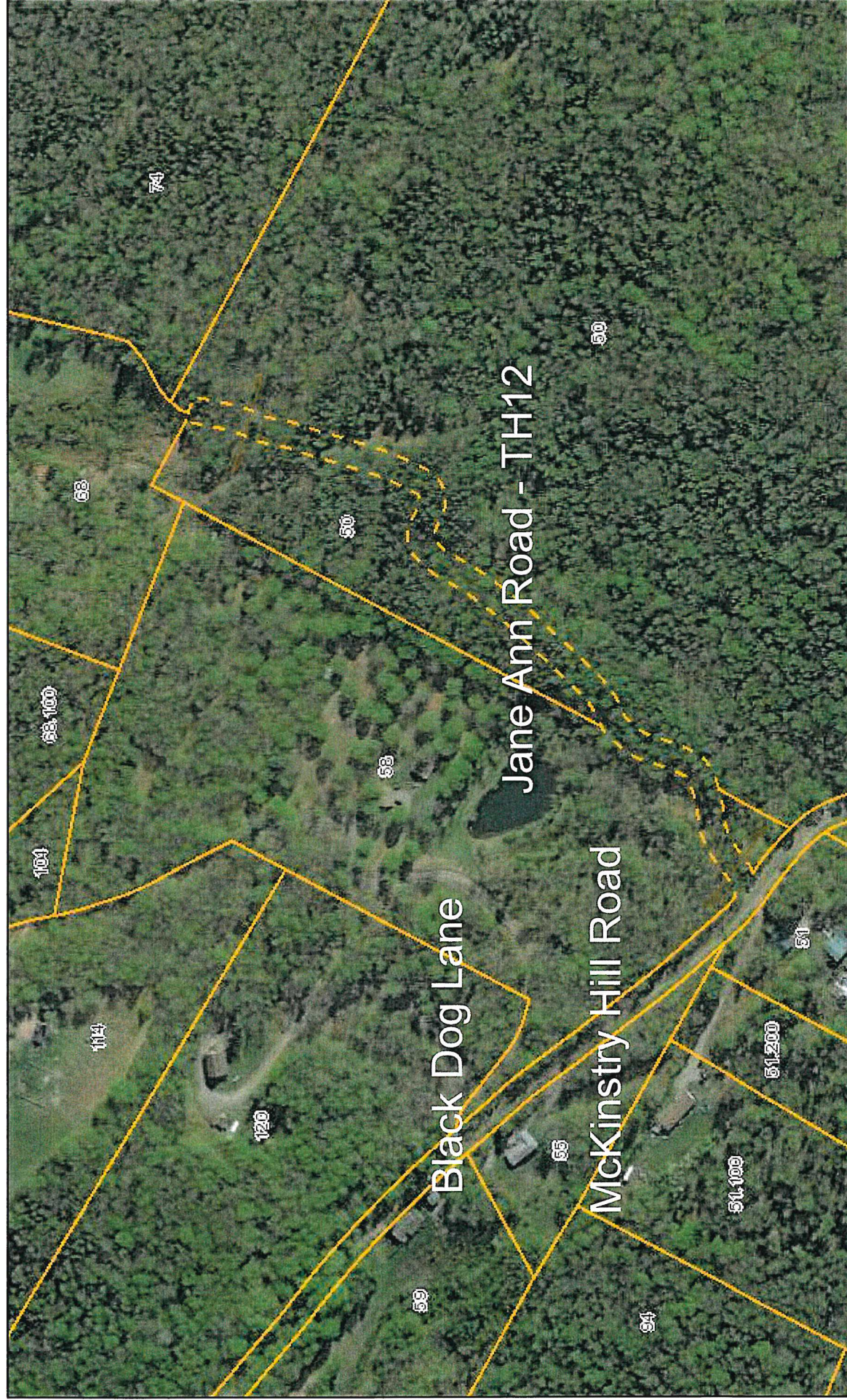
## Hyde Park, VT

1 inch = 268 Feet

1 inch = 268 Feet



www.cai-tech.com



Data shown on this map is provided for planning and informational purposes only. The municipality and CAI Technologies are not responsible for any use for other purposes or misuse or misrepresentation of this map.





# Diggins Road - TH #15

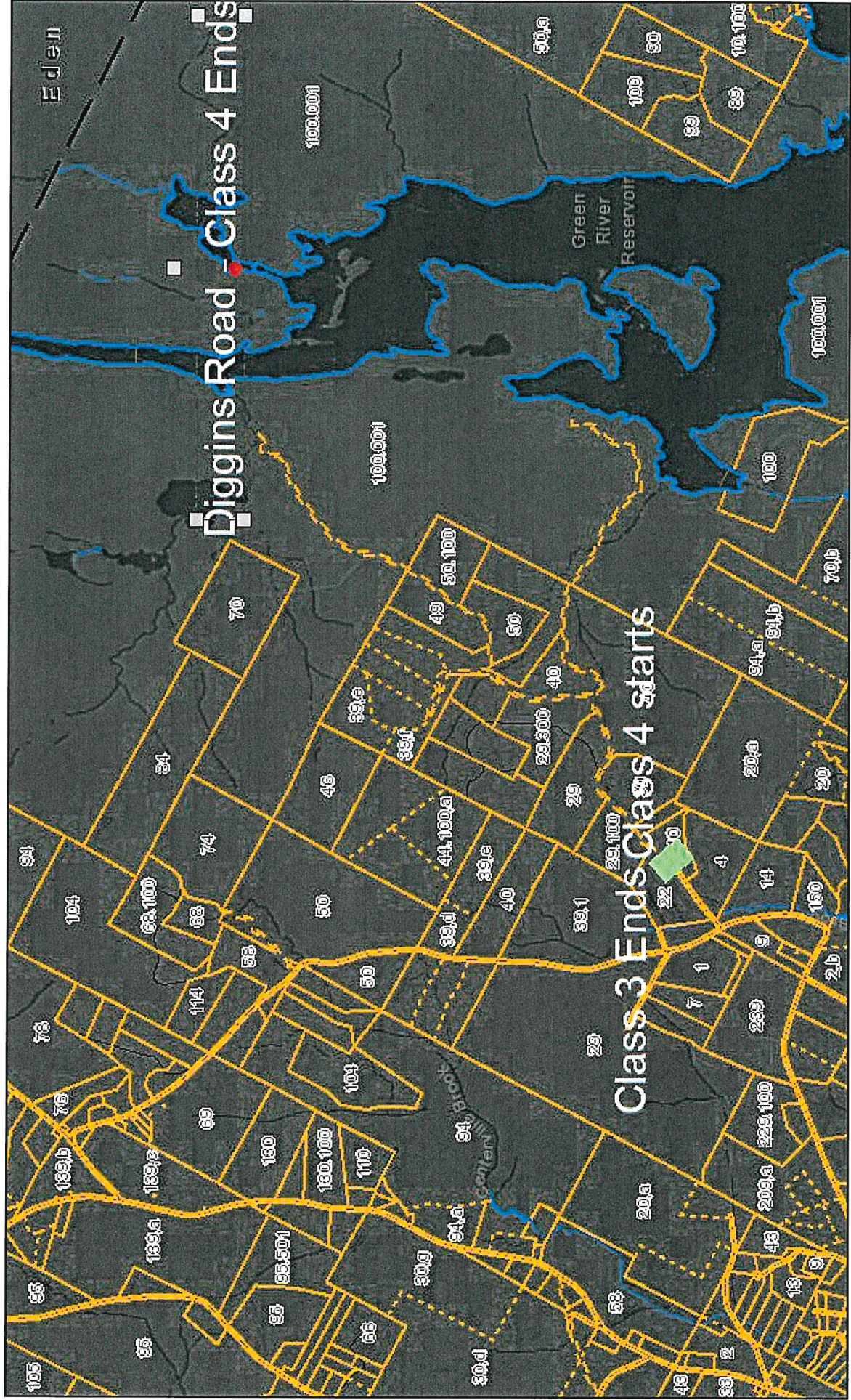
Hyde Park, VT

September 5, 2018

1 inch = 2151 Feet



[www.cai-tech.com](http://www.cai-tech.com)



Data shown on this map is provided for planning and informational purposes only. The municipality and CAI Technologies are not responsible for any use for other purposes or misuse or misrepresentation of this map.





# Zack Woods to Wolcott - TH #22

Hyde Park, VT

September 5, 2018

1 inch = 268 Feet



[www.cai-tech.com](http://www.cai-tech.com)



Data shown on this map is provided for planning and informational purposes only. The municipality and CAI Technologies are not responsible for any use for other purposes or misuse or misrepresentation of this map.



TH 23 Long Hill Rd







# Fleury Road - TH #25

Hyde Park, VT

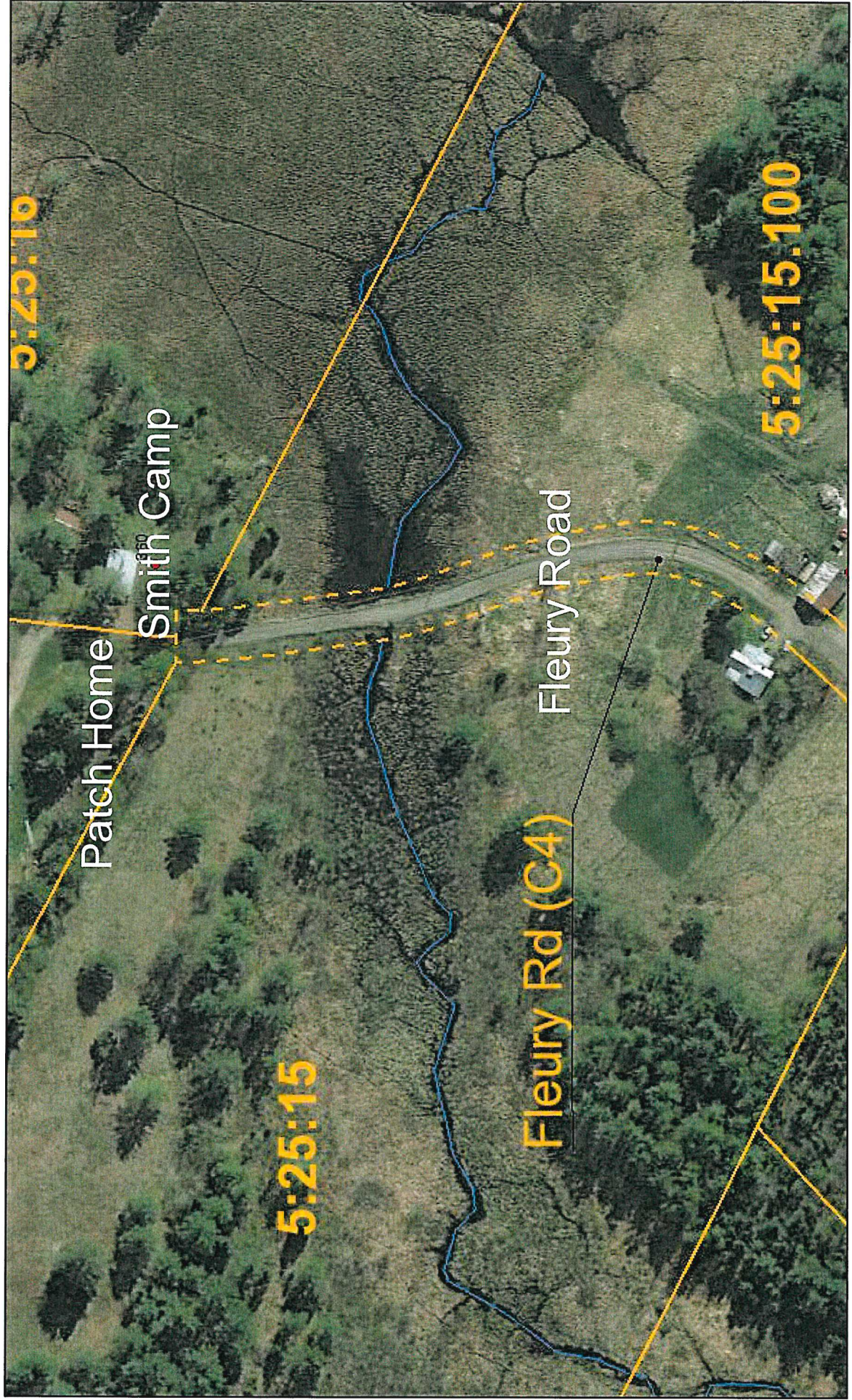
1 inch = 134 Feet



September 5, 2018



[www.cai-tech.com](http://www.cai-tech.com)



Data shown on this map is provided for planning and informational purposes only. The municipality and CAI Technologies are not responsible for any use for other purposes or misuse or misrepresentation of this map.





# Munson Rd - TH #27

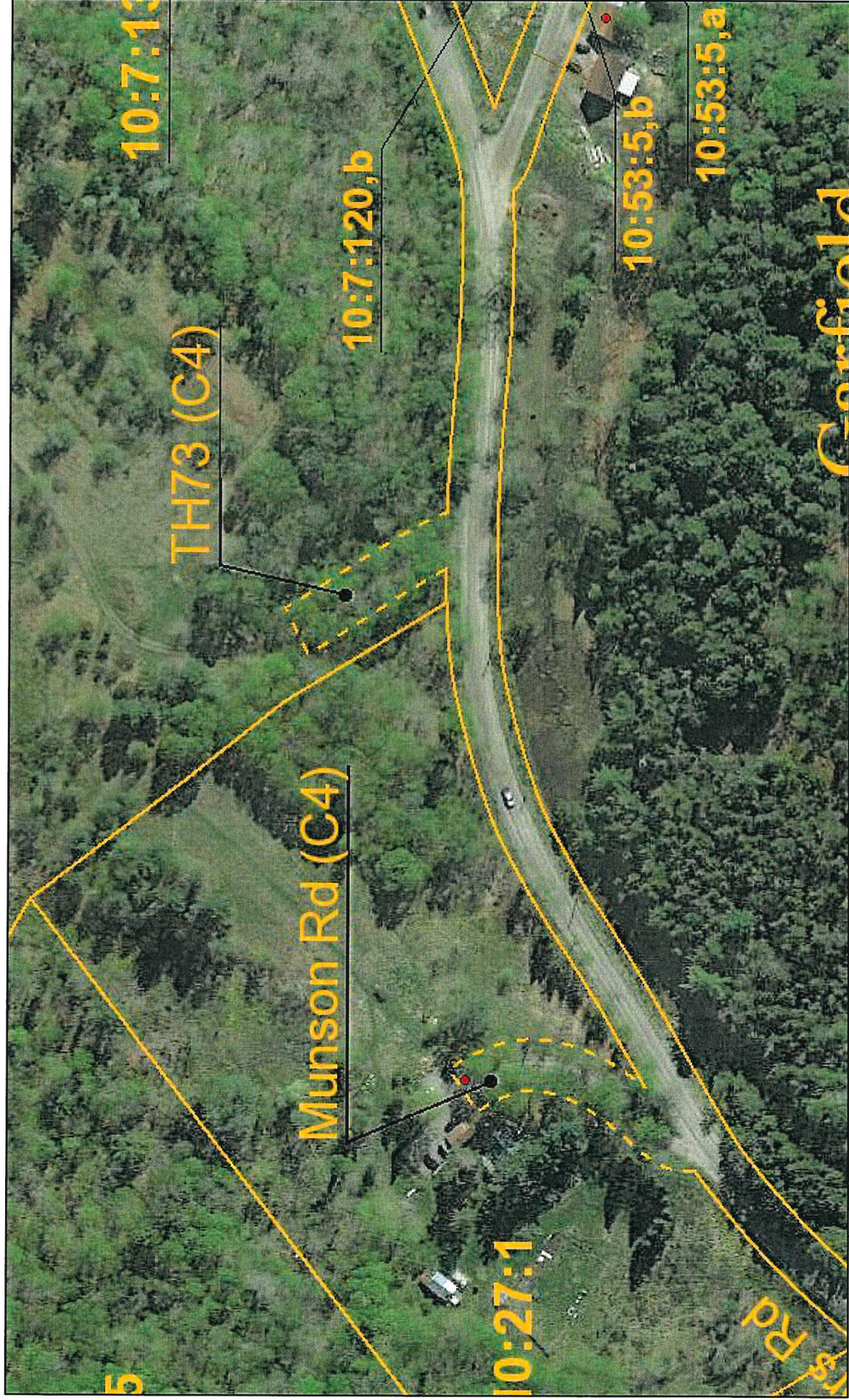
Hyde Park, VT

September 5, 2018

1 inch = 134 Feet

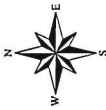


[www.cai-tech.com](http://www.cai-tech.com)



Data shown on this map is provided for planning and informational purposes only. The municipality and CAI Technologies are not responsible for any use for other purposes or misuse or misrepresentation of this map.





# Bourdeau Rd - TH #29

Hyde Park, VT

September 5, 2018

1 inch = 134 Feet



[www.cai-tech.com](http://www.cai-tech.com)



Data shown on this map is provided for planning and informational purposes only. The municipality and CAI Technologies are not responsible for any use for other purposes or misuse or misrepresentation of this map.





## Vermont Agency of Natural Resources



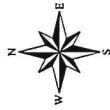
DISCLAIMER: This map is for general reference only. Data layers that appear on this map may or may not be accurate, current, or otherwise reliable. ANR and the State of Vermont make no representations of any kind, including but not limited to, the warranties of merchantability, or fitness for a particular use, nor are any such warranties to be implied with respect to the data on this map.

809.0 0 404.00 809.0 Meters  
 WWGS\_1984\_Web\_Mercator\_Auxiliary\_Sphere  
 1" = 1327 Ft. 1cm = 159 Meters  
 THIS MAP IS NOT TO BE USED FOR NAVIGATION  
 © Vermont Agency of Natural Resources

## NOTES

Map created using ANR's Natural Resources Atlas





# Longmore Hill Class 4 - TH #31

Hyde Park, VT

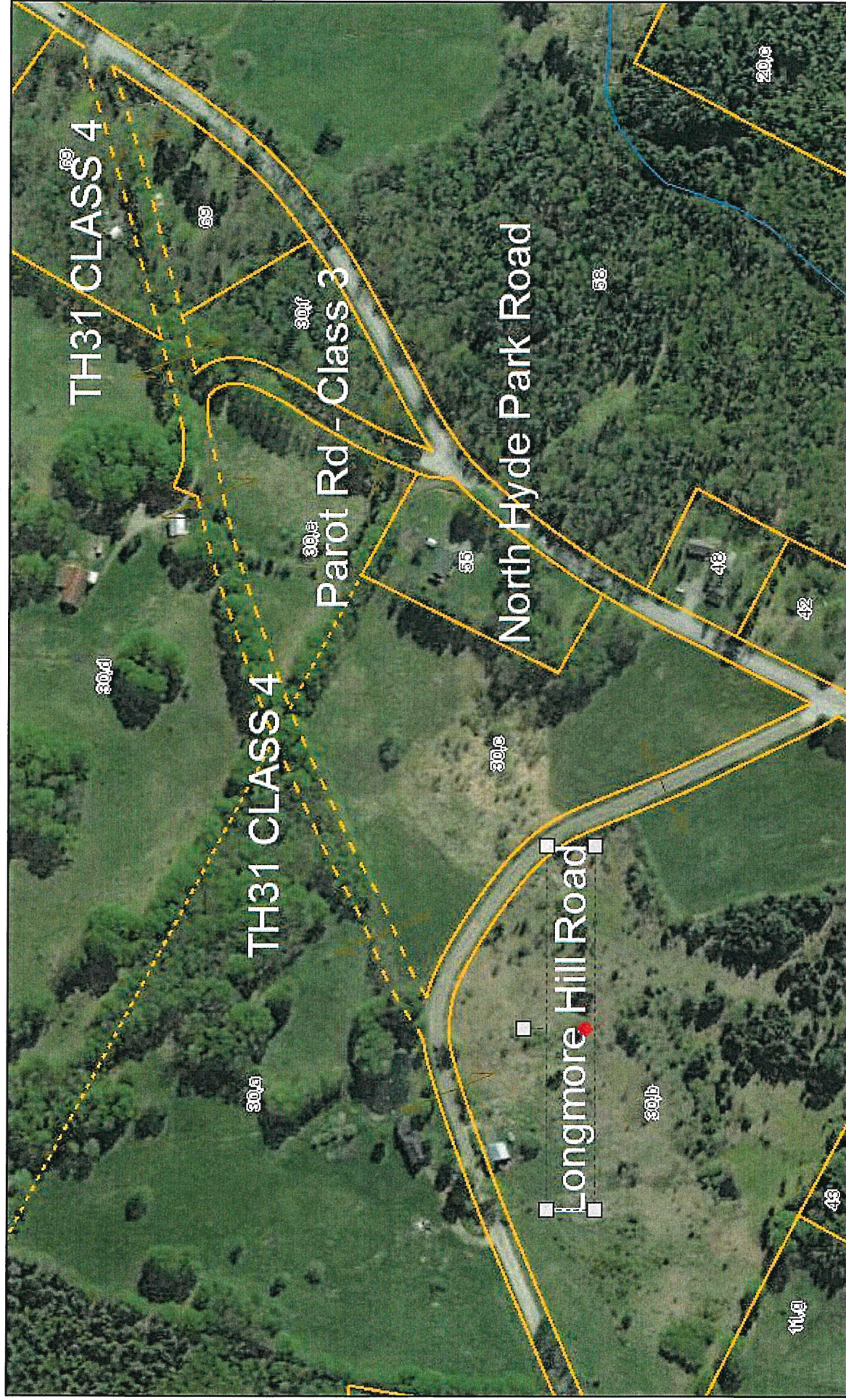
September 5, 2018

1 inch = 268 Feet



Precision Mapping. Geographic Solutions.

[www.cai-tech.com](http://www.cai-tech.com)



Data shown on this map is provided for planning and informational purposes only. The municipality and CAI Technologies are not responsible for any use for other purposes or misuse or misrepresentation of this map.





# Webster Road / Quiet Lane - TH# 38

Hyde Park, VT

September 5, 2018

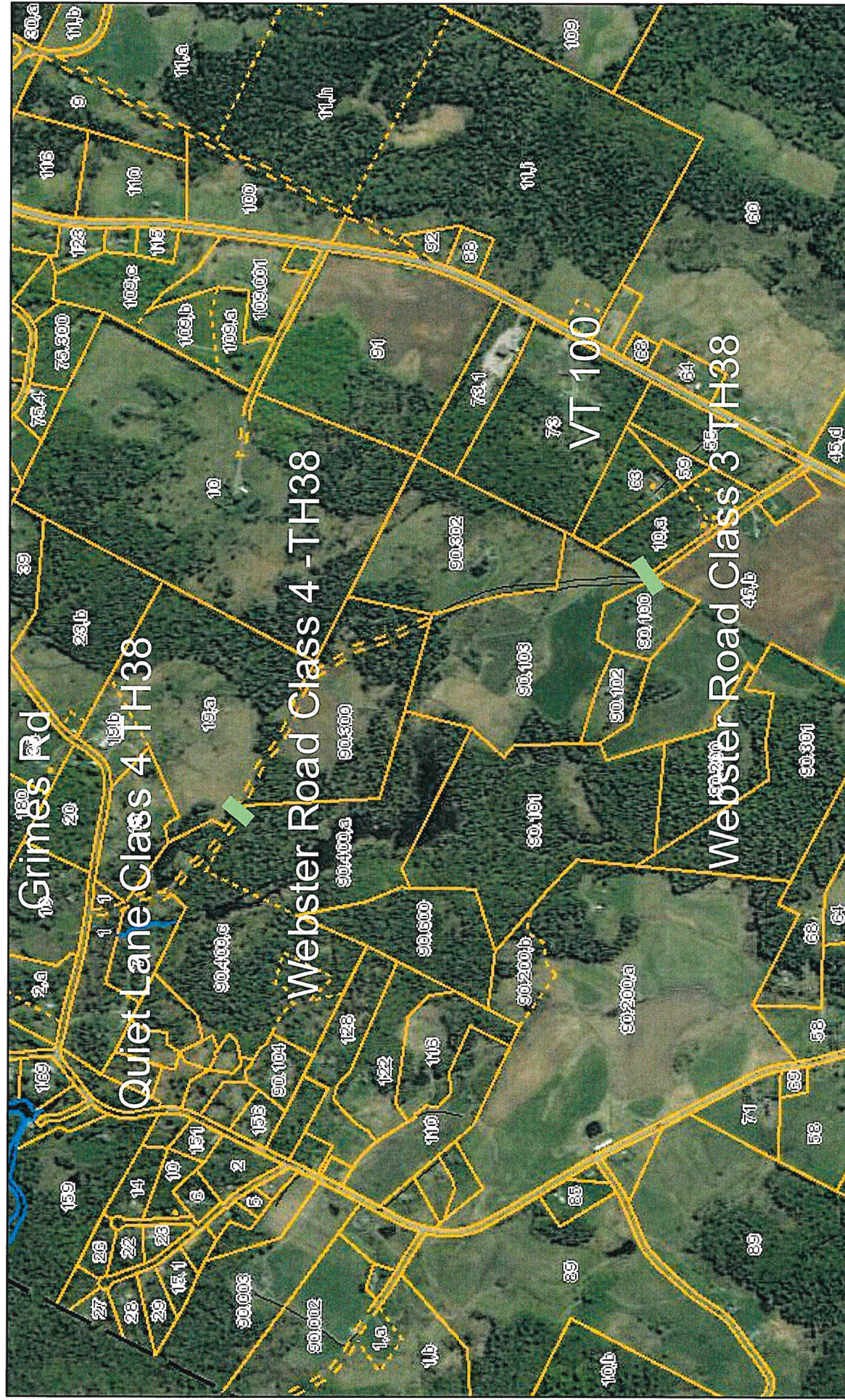
1 inch = 1075 Feet



[www.cai-tech.com](http://www.cai-tech.com)



Precision Mapping Geospatial Solutions



Data shown on this map is provided for planning and informational purposes only. The municipality and CAI Technologies are not responsible for any use for other purposes or misuse or misrepresentation of this map.





## Mead Road - Class 3 and Class 4 at Carpenter

## Vermont Agency of Natural Resources

**vermont.gov**

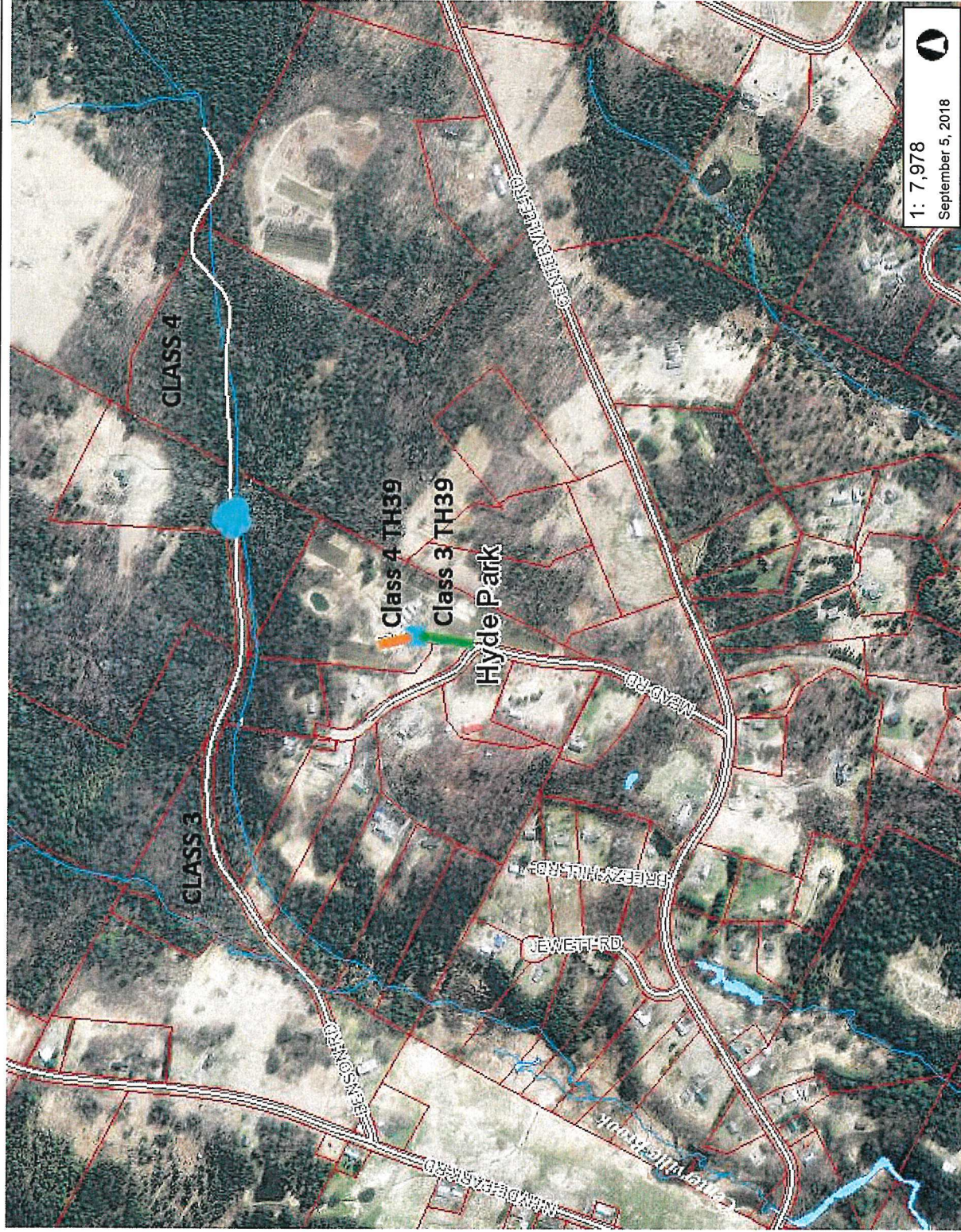


## LEGEND

- Parcels (Standardized)**
- Roads**
- Interstate
  - Principal Arterial
  - Minor Arterial
  - Major Collector
  - Minor Collector
  - Local
  - Not part of function Classification S
- Waterbody**
- Stream
- Parcels (Non-Standardized)**
- Town Boundary**

## NOTES

Map created using ANR's Natural Resources Atlas



DISCLAIMER: This map is for general reference only. Data layers that appear on this map may or may not be accurate, current, or otherwise reliable. ANR and the State of Vermont make no representations of any kind, including but not limited to, the warranties of merchantability, or fitness for a particular use, nor are any such warranties to be implied with respect to the data on this map.

405.0 0 202.00 405.0 Meters

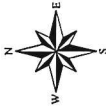
WGS\_1984\_Web\_Mercator\_Auxiliary\_Sphere

1" = 665 Ft. 1cm = 80 Meters

THIS MAP IS NOT TO BE USED FOR NAVIGATION

© Vermont Agency of Natural Resources





# Old Farm Lane - TH# 42

Hyde Park, VT

1 inch = 134 Feet



September 5, 2018

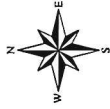


[www.cai-tech.com](http://www.cai-tech.com)



Data shown on this map is provided for planning and informational purposes only. The municipality and CAI Technologies are not responsible for any use for other purposes or misuse or misrepresentation of this map.





# Unnamed to Wickenden - TH# 45

Hyde Park, VT

September 5, 2018

1 inch = 268 Feet



www.cai-tech.com



Data shown on this map is provided for planning and informational purposes only. The municipality and CAI Technologies are not responsible for any use for other purposes or misuse or misrepresentation of this map.





# Fagnant Farm Road - TH# 50

Hyde Park, VT

September 5, 2018

1 inch = 134 Feet

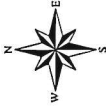


[www.cai-tech.com](http://www.cai-tech.com)



Data shown on this map is provided for planning and informational purposes only. The municipality and CAI Technologies are not responsible for any use for other purposes or misuse or misrepresentation of this map.





# Leriche Road - TH51

Hyde Park, VT

September 6, 2018

1 inch = 537 Feet



[www.cai-tech.com](http://www.cai-tech.com)



Data shown on this map is provided for planning and informational purposes only. The municipality and CAI Technologies are not responsible for any use for other purposes or misuse or misrepresentation of this map.





# East Johnson Road - TH #56

Hyde Park, VT

September 6, 2018

1 inch = 268 Feet



[www.cai-tech.com](http://www.cai-tech.com)



Data shown on this map is provided for planning and informational purposes only. The municipality and CAI Technologies are not responsible for any use for other purposes or misuse or misrepresentation of this map.





# Ten Bends/Railroad/Morey Road - TH #59

Hyde Park, VT

September 6, 2018

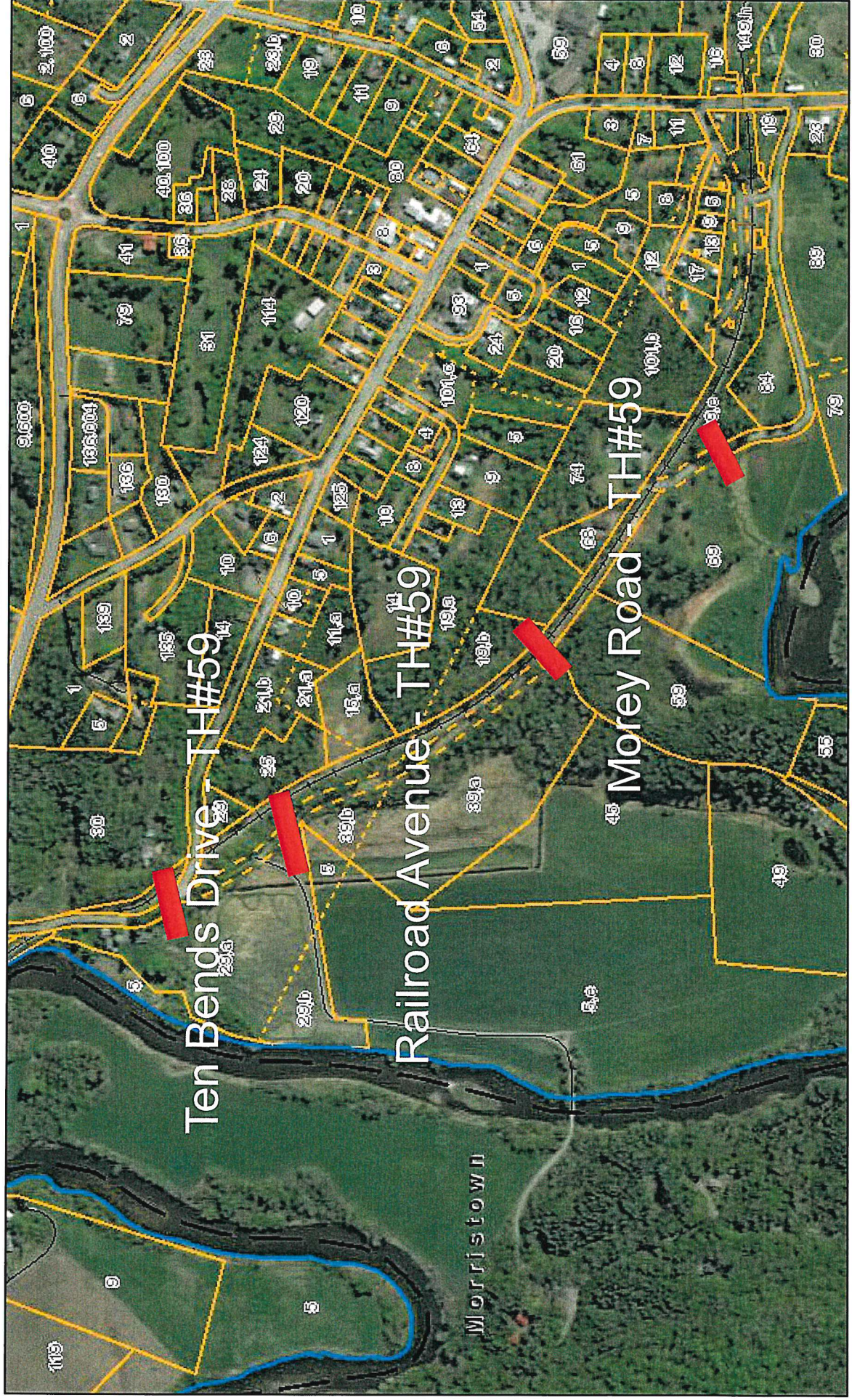
1 inch = 537 Feet



www.cai-tech.com

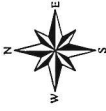


CAI Technologies  
Precision Mapping Geographic Solutions



Data shown on this map is provided for planning and informational purposes only. The municipality and CAI Technologies are not responsible for any use for other purposes or misuse or misrepresentation of this map.





# Cross Road at LVRT - TH #62

Hyde Park, VT

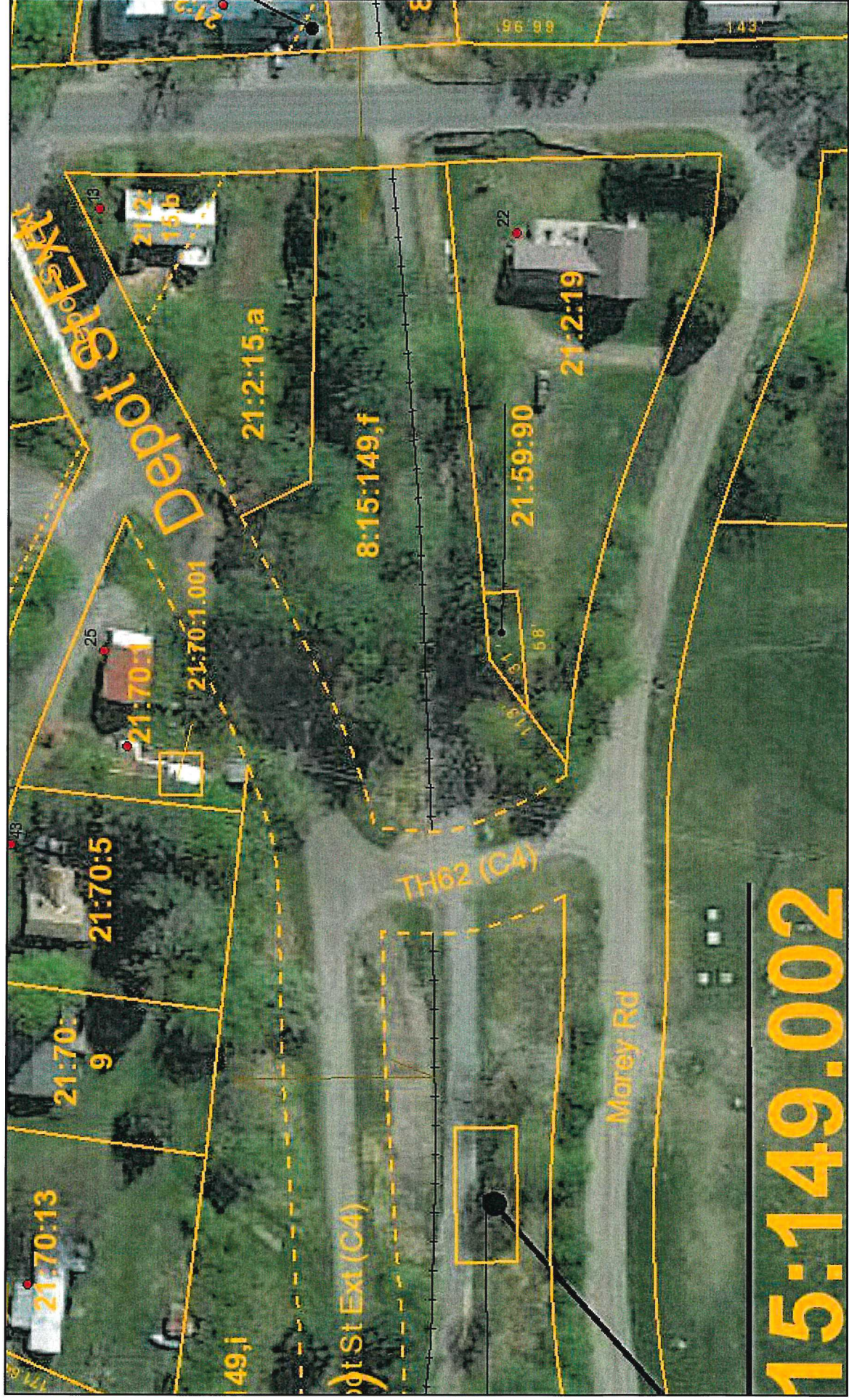
September 6, 2018

1 inch = 67 Feet



CAI Technologies  
Precision Mapping Geospatial Solutions

www.cai-tech.com



Data shown on this map is provided for planning and informational purposes only. The municipality and CAI Technologies are not responsible for any use for other purposes or misuse or misrepresentation of this map.





# Commonwealth Ave - TH #68

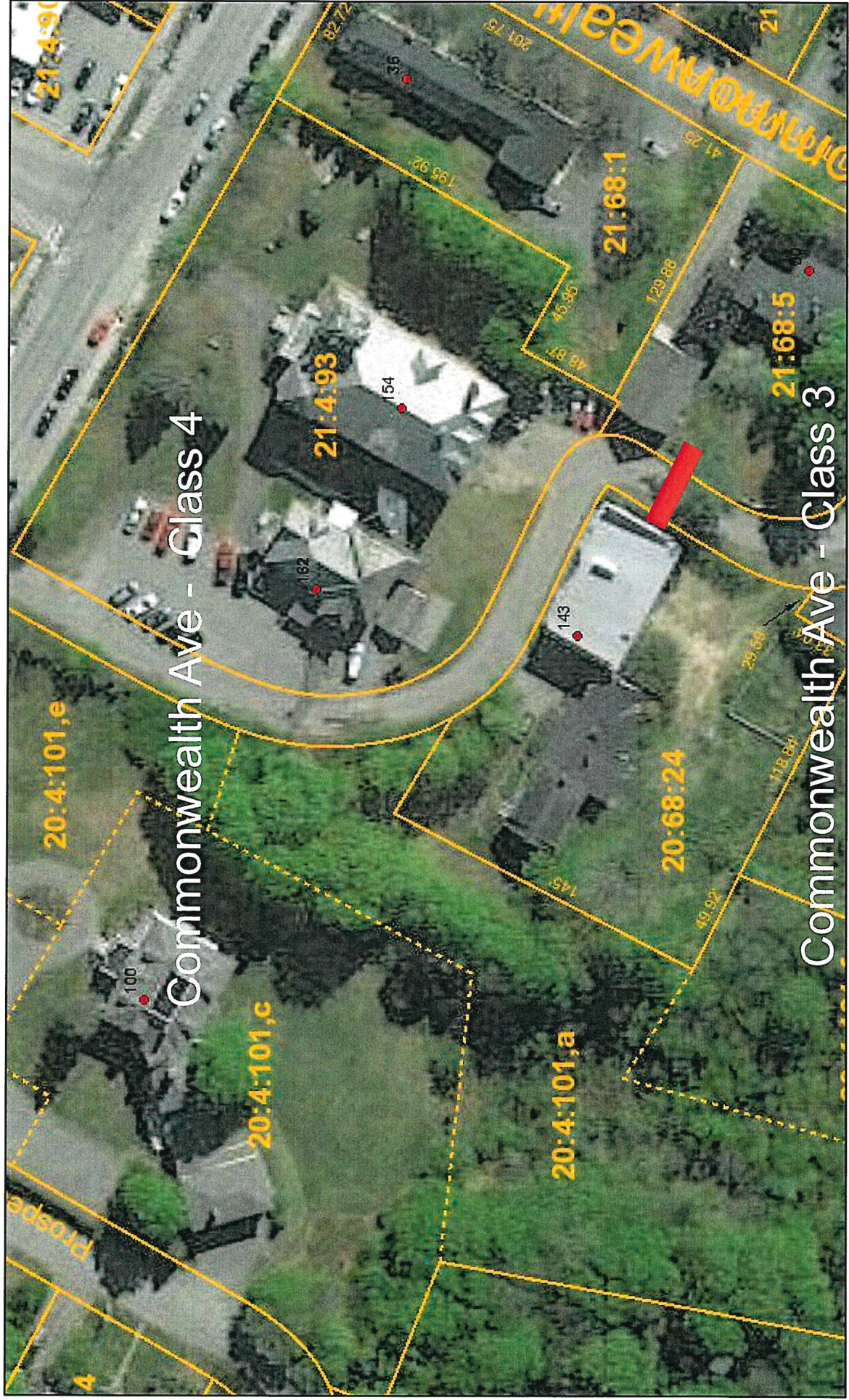
Hyde Park, VT

September 6, 2018

1 inch = 67 Feet



[www.cai-tech.com](http://www.cai-tech.com)



Data shown on this map is provided for planning and informational purposes only. The municipality and CAI Technologies are not responsible for any use for other purposes or misuse or misrepresentation of this map.





# Unnamed along westerly line of VOHP TH72

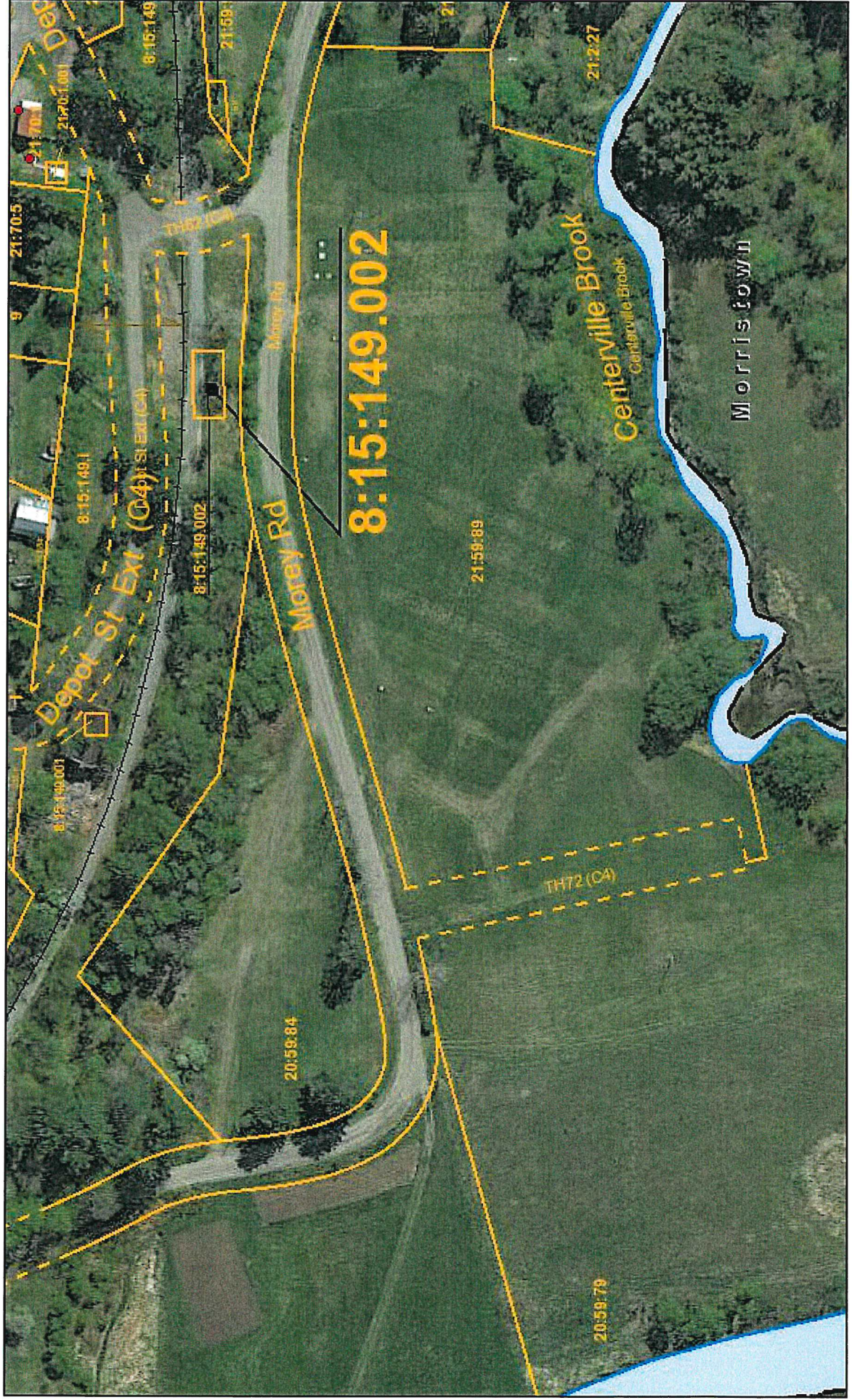
Hyde Park, VT

September 6, 2018

1 inch = 134 Feet



www.cai-tech.com



Data shown on this map is provided for planning and informational purposes only. The municipality and CAI Technologies are not responsible for any use for other purposes or misuse or misrepresentation of this map.





# Unnamed to Terrier home - TH #73

Hyde Park, VT

September 5, 2018

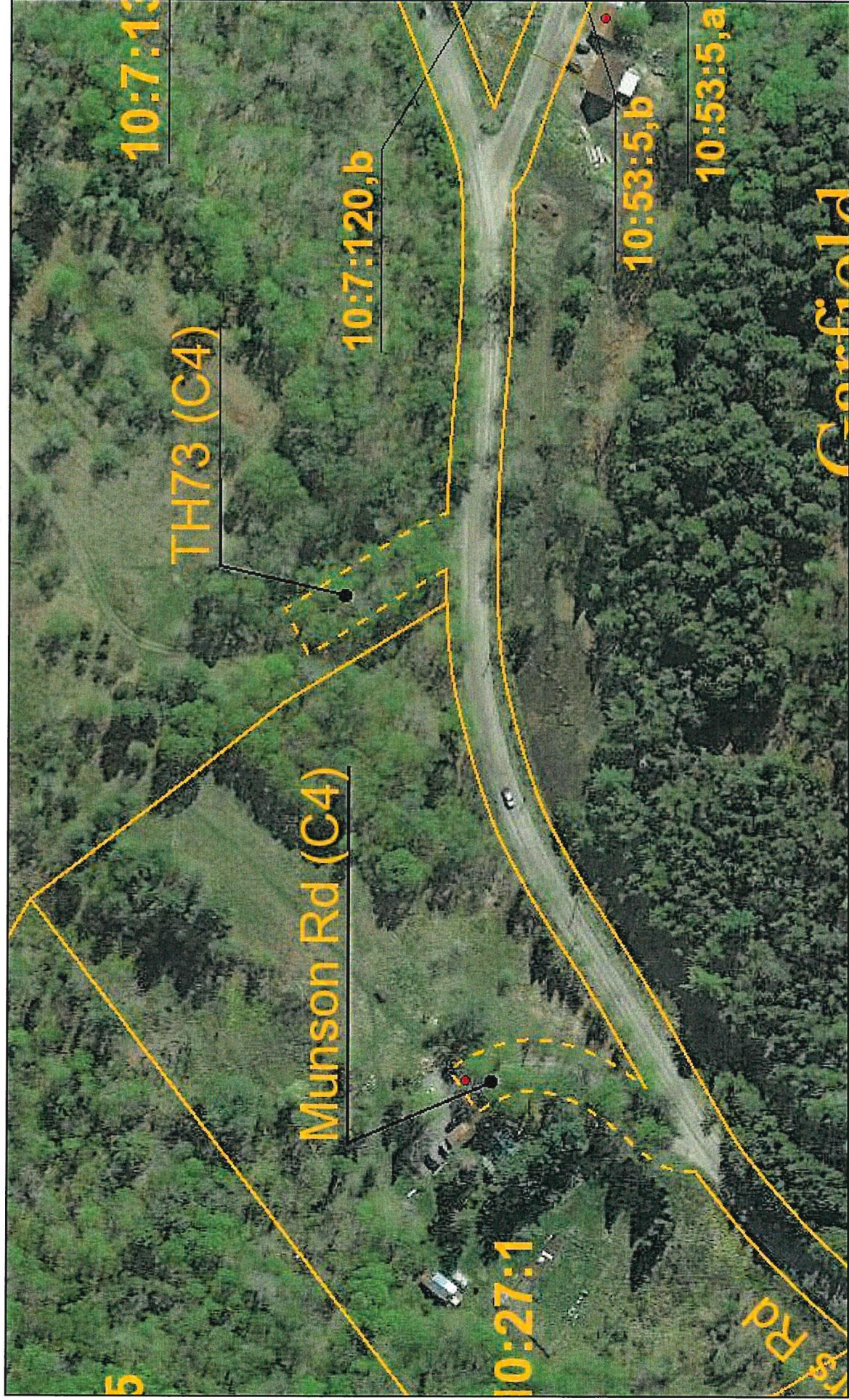
1 inch = 134 Feet



www.cai-tech.com



CAI Technologies  
Precision Mapping Geospatial Systems



Data shown on this map is provided for planning and informational purposes only. The municipality and CAI Technologies are not responsible for any use for other purposes or misuse or misrepresentation of this map.





# Thompson Hill Road - TH #75

Hyde Park, VT

September 6, 2018

1 inch = 1075 Feet



[www.cai-tech.com](http://www.cai-tech.com)



Data shown on this map is provided for planning and informational purposes only. The municipality and CAI Technologies are not responsible for any use for other purposes or misuse or misrepresentation of this map.





# Unnamed Road TH #76 to Bullard parcel

Hyde Park, VT

September 6, 2018

1 inch = 268 Feet



[www.cai-tech.com](http://www.cai-tech.com)



Data shown on this map is provided for planning and informational purposes only. The municipality and CAI Technologies are not responsible for any use for other purposes or misuse or misrepresentation of this map.





# Heath Road TH #78 to Bullard home

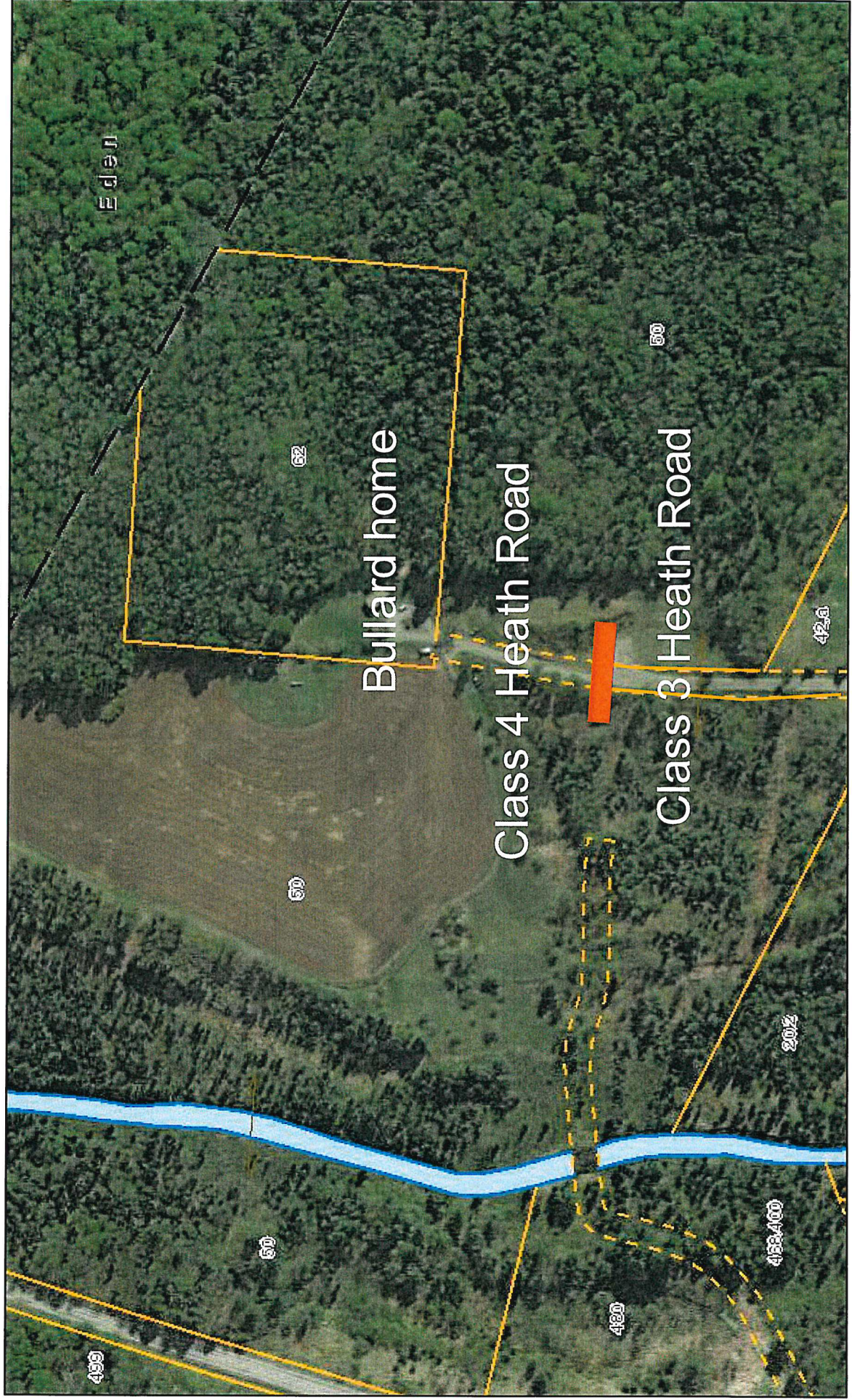
Hyde Park, VT

September 6, 2018

1 inch = 268 Feet



[www.cai-tech.com](http://www.cai-tech.com)



Data shown on this map is provided for planning and informational purposes only. The municipality and CAI Technologies are not responsible for any use for other purposes or misuse or misrepresentation of this map.





# Langdell Road - Loop TH #9 & #74

Hyde Park, VT



September 5, 2018

1 inch = 134 Feet

[www.cai-tech.com](http://www.cai-tech.com)



Data shown on this map is provided for planning and informational purposes only. The municipality and CAI Technologies are not responsible for any use for other purposes or misuse or misrepresentation of this map.